

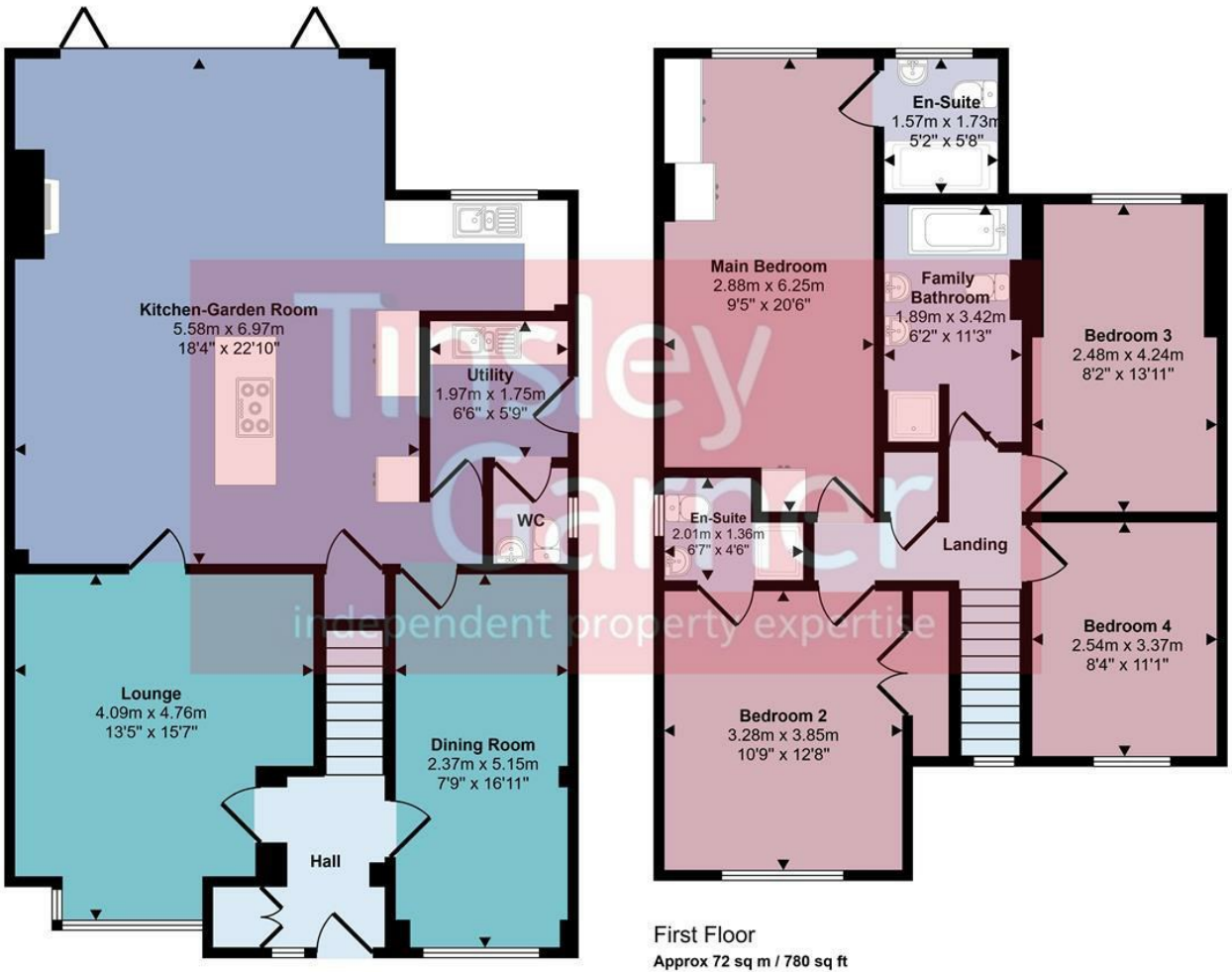


27 Copeland Drive, Stone, Staffordshire, ST15 8YP

Back on sale due to a broken chain! Trust us – when you see this house, you'll want to buy it, so be quick to avoid disappointment! This is a beautifully crafted re-imagination of a suburban family home which has been extended, remodelled and upgraded by the present owners to create a superbly balanced home that ticks all the boxes for family living. The house features two reception rooms together with a fabulous open plan kitchen / dining / family room with bi-fold doors opening to the gardens, complemented upstairs by an elegant sufficiency of four bedrooms, two en-suite shower rooms and a luxurious family bathroom. Step outside to discover a garden tailor made for outdoor living, with oodles of entertaining space, sunny deck and a secluded corner for a hot tub. Great location on the southern outskirts of Stone, walking distance to St Michael's school and a host of amenities and a little over a mile from Stone town centre.

£485,000

Approx Gross Internal Area
159 sq m / 1707 sq ft



Ground Floor
Approx 86 sq m / 927 sq ft

First Floor
Approx 72 sq m / 780 sq ft

This floorplan is only for illustrative purposes and is not to scale. Measurements of rooms, doors, windows, and any items are approximate and no responsibility is taken for any error, omission or mis-statement. Icons of items such as bathroom suites are representations only and may not look like the real items. Made with Made Snappy 360.

Energy Efficiency Rating		
	Current	Potential
Very energy efficient - lower running costs		
(92 plus) A		
(81-91) B		
(69-80) C		
(55-68) D		
(39-54) E		
(21-38) F		
(1-20) G		
Not energy efficient - higher running costs		
England & Wales		EU Directive 2002/91/EC

Environmental Impact (CO ₂) Rating		
	Current	Potential
Very environmentally friendly - lower CO ₂ emissions		
(92 plus) A		
(81-91) B		
(69-80) C		
(55-68) D		
(39-54) E		
(21-38) F		
(1-20) G		
Not environmentally friendly - higher CO ₂ emissions		
England & Wales		EU Directive 2002/91/EC